

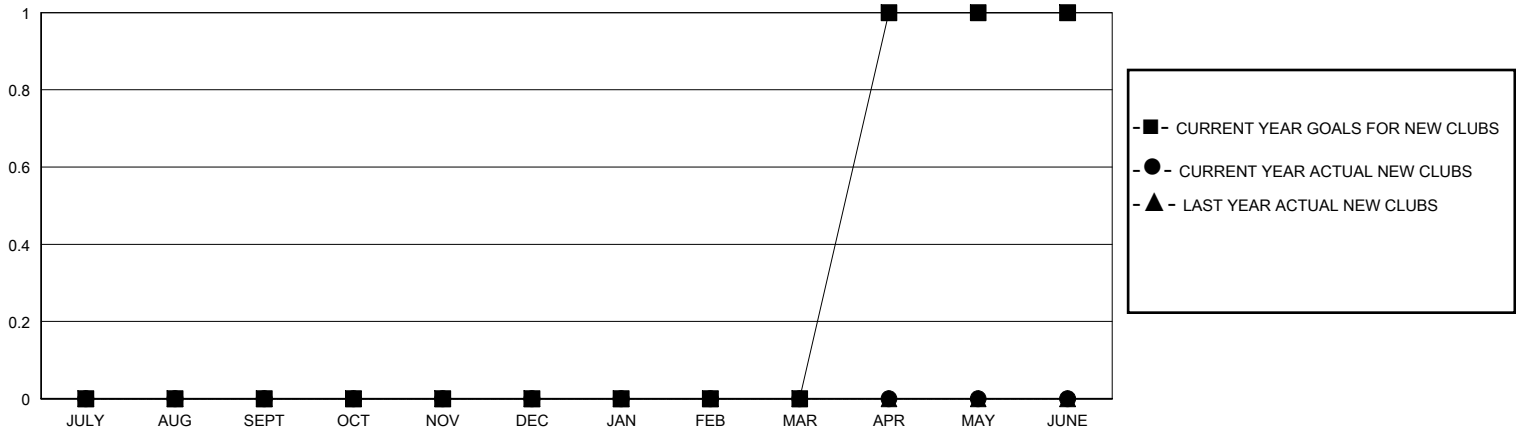
MONTHLY MEMBERSHIP PROGRESS REPORT

District 11 D1

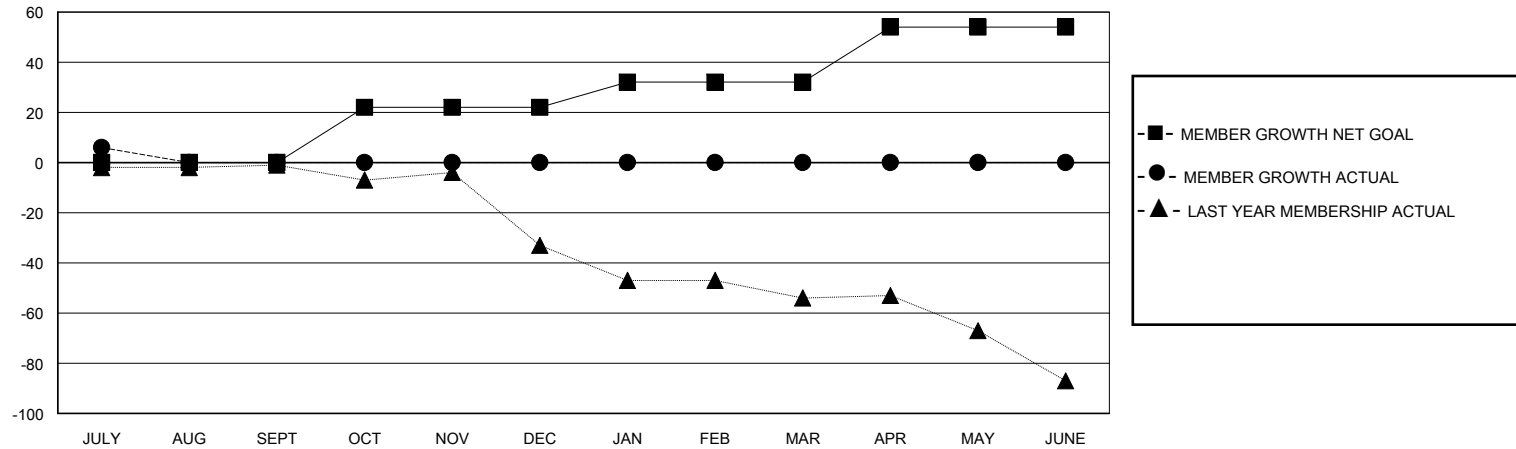
Results as of: 7/31/2025

GMT:				LOCATION MICHIGAN				GMT CA			
Clubs				Members							
RESULTS FOR 2025-2026				RESULTS FOR 2025-2026							
QUARTER	NEW CLUB GOAL	NEW CLUBS	DROPPED CLUBS	QUARTER	MEMBER GROWTH NET GOAL	MEMBER GROWTH ACTUAL	DROPPED MEMBERS ACTUAL (including transfers)				
JULY/AUG/SEPT	0	0	0	JULY/AUG/SEPT	0	11	4				
OCT/NOV/DEC	0	0	0	OCT/NOV/DEC	22	0	0				
JAN/FEB/MAR	0	0	0	JAN/FEB/MAR	10	0	0				
APR/MAY/JUNE	1	0	0	APR/MAY/JUNE	22	0	0				

GOALS AND ACTUAL NEW CLUBS CUMULATIVE



GOALS AND ACTUAL MEMBERS CUMULATIVE



DROPPED CLUBS: 0		8 CLUBS OF 34 ADDED 1 OR MORE NEW MEMBERS	<u>GENDER DISTRIBUTION</u>	
			MALE	588 (67.90%)
			FEMALE	278 (32.10%)
<u>DROPPED MEMBERS</u>		CLICK HERE FOR CUMULATIVE MEMBERSHIP DATA		
DECEASED	0		TOTAL FAMILY UNIT MEMBERS 210	
CLUB CANCELLED	0			
OTHER	4		FAMILY MEMBERS PAYING HALF DUES 107	
TOTAL	4			